

EU Homelessness Count

Project team

Evelien Demaerschalk

Nana Mertens

dr. Nóra Teller

prof. dr. Koen Hermans



EU Homelessness Count



Project aims

To develop and implement
a common **methodology** to measure

ETHOS Light 1-3
at the **city** level

Point-in-time method

1= People in public spaces

2= In emergency accommodation

3= In accommodation for PEH or temporary housing



2024

15 point-in-time counts
in 10 member states

2024 partners

**KRALJI
ULICE**



University of Ljubljana



FOCUS
Ireland



fio.PSD



Università
di Catania



Inštitút pre výskum
práce a rodiny



Urbalyon



UCLouvain

Steps



Common operationalisation of ETHOS Light



Methodology: modular approach



ETHOS 1: street count methodology



Questionnaire and data collection methods




Analysis of the results




Feedback on methodology and lessons learned

Common operationalisation of ETHOS Light



ETHOS Light 1	
Operational category	People living rough
Living situation	Public spaces/publicly accessible places
Definition	Living in the streets, public spaces or publicly accessible places without a shelter that can be defined as living quarters
Characteristics	Vulnerable, publicly accessible Not a dwelling, not a structure meant for habitation, no access to amenities
Subcategories	<p>Public spaces: street, under bridge, park, tent in a public space, car, van, truck, ...</p> <p>Public transport: metro station, bus stop, inside a tram, inside a train,</p> <p>Private space but publicly accessible: entrance of a building or shop, a porch, a shop, car park, derelict building, uncompleted dwelling, tent,</p>



ETHOS Light 5	
Operational category	People living in non-conventional dwellings due to lack of housing
Living situation	Mobile homes Non-conventional buildings Temporary structures
Definition	Unsuitable shelter, accommodation not fit for habitation and insecure housing.
Characteristics	Structure or dwelling designed for accommodation purposes. Often lack of legal recognition or regulation. Vulnerable situation = poor housing quality and/or high housing uncertainty
Subcategories	<p>Non-conventional buildings: garage, shack, garden house, encampments, commercial building, caves,</p> <p>Mobile homes: caravan, camper, boat,</p> <p>Conventional dwellings: holiday home, occupied building with(out) permission, housing without basic facilities (bathroom/kitchen), housing without rental contract</p> <p>Informal shelters: not a recognized shelter</p> <p>Workers hostels:</p>

Methodology: modular approach

	BASIC COUNT	ELABORATE COUNT	COMPREHENSIVE COUNT
		Services-based Count	Extended service-based count
ETHOS Light	1-3	1-3	1-3 + 4 , + 5, + 6
Services involved	Services for PEH: <ul style="list-style-type: none"> • Night shelters • Hostels • Temporary accommodation • Transitional accommodation • Women’s shelters • Refuge accommodation 	Services for PEH <ul style="list-style-type: none"> • Night shelters • Hostels • Temporary accommodation • Transitional accommodation • Women’s shelters • Refuge accommodation 	Services for PEH All relevant services in the city: <ul style="list-style-type: none"> • Low-threshold services • General social services • Public social services • Health care institutions • Housing agencies
Data source	HEAD COUNT	SURVEY PLUS	Main method: Questionnaire filled in by all services
ETHOS Light 1	Focus on extent	Questionnaire filled in by services for PEH or by persons themselves	Additional SURVEY PLUS
Data source	Available administrative data from services	Additional data collection by services	Additional data collection by services
ETHOS Light 2-3		Survey and/or admin data	Survey and/or admin data
Profile data	Limited coverage	Extensive	Extensive

Why a modular approach?

- Balancing
 - Local ownership: local data collection, needs, traditions, ...
 - Comparability: between cities, countries
- Scale and role of local service network
- Tradition of data collection at local and national level
- Ethical prerogative: avoiding harm



ETHOS Light 1: development of a street count methodology

A street count is a method of data collection about persons sleeping rough on a specific night/day by visiting pre-defined zones in the city or metropolitan area/region.



A: HEAD COUNT (EXTENT FOCUSED)

- Carried out in the late evening and night hours
- focusing on (just about to be) bedded people,
- covering selected zones of the cities comprehensively.

The approach is to visit (defined) **publicly accessible places** with the help of social workers, professionals and volunteers and to **count people who are defined as experiencing unsheltered homelessness.**

Optional collection of profile data is possible if the PEH is available and willing to engage into conversation, but it is not the primary goal.



B: SURVEY + (EXTENT AND PROFILE FOCUSED)

- Carried out during the day/over a period of time among people who may not be using emergency/night shelters, and in the evening/night hours,
- focusing on people in addition to those who are in touch with services, including outreach teams and day centers that offer services primarily for PEH,
- there are additional selected zones within the city/known to services where people are visited and interviewed.

The approach complements the results of the (extended) service-based count's which includes unsheltered clients of outreach services with the help of social workers, and unsheltered clients of day centres and other services. Thus, additional data will be collected **to count those who are defined as unsheltered homeless people but have so far, not been in touch with any services.**

The main goal is to collect extent and profile information by visiting and walking through predefined zones where such groups are likely to be found.

Mandatory profile variables

- **Gender:** the gender of the person experiencing homelessness and housing exclusion
- **Age:** the age of the person experiencing homelessness and housing exclusion expressed in a range of a few years/ decades
- **Nationality/citizenship:** whether the person experiencing homelessness and housing exclusion is a citizen or a national of the country where the data collection is taking place
- **Residence status:** the status of the person experiencing homelessness and housing exclusion in the given country to assess the set of potential rights the person may possess in terms of access to services
- **Actual living/family situation:** the type of partnership and family arrangements the person experiencing homelessness and housing exclusion is living in
- **Living situation on the night/day of the count:** the category of the living situation on the reference date of the data collection, expressed as an ETHOS category
- **Triggers of homelessness:** the mechanisms and life events that are deemed to have played a role in the process of becoming homeless
- **Duration of homelessness:** the time span spent in homelessness and housing exclusion expressed in months/years

City reports

Porto

Inhabitants 231,800
Experience of homelessness counts Annual service-based annual count since 2018
Headcount in 2019

October 8

Choices made

	ETHOS Light 1	ETHOS Light 2-3
methodology	Headcount Questionnaires filled by • outreach teams + PEH • 7 PM - 4 AM	Questionnaires filled by • professionals + PEH
geographical area	Municipality of Porto	Municipality of Porto
data collection tools	Paper	Digital
type of services included	• Outreach services	• Night shelters • Emergency shelters • Women's refuges • Temporary housing solutions
specific attention to subgroups	No	No

→ 5 services → 18 services

How to read this report?

- (#) Next to every header, refers to the total number of persons for whom there is a specific answer. It excludes the answer 'unknown' and missing values (missing admin data or data missing from street counts).
- Refers to the total number of persons who answered the question with 'unknown'.
- Refers to the total number of persons for whom the data is missing.
- # <10 Refers to a subgroup with numbers smaller than 10. Percentages are then removed.
- PEH People Experiencing Homelessness

This count also features a headcount of people sleeping rough. For these persons not all information is available. For more information see report or contact the researchers.

31

Porto

607 adults counted

80,1% male # 475
19,7% female # 117
non-binary/diverse # <10

Living situation (# 607)

ETHOS Light category	Adults # 607	%
1 in public space	281	46,3
2 in emergency accommodation	36	5,9
3 in accommodation for PEH or temporary housing	290	47,8

Household (# 442)

75,1% Single # 332
7,9% Couple living without child(ren) # 35
Couple living with child(ren) # <10
Other (14,5%)

Age groups (# 568)

Age group	%
16-17	0,0%
18-24	0,2%
25-29	5,2%
30-49	30,6%
50-64	32,2%
65+	31,5%

32

Porto

Nationality (# 444)

86,9% Portuguese # 386
11,7% non-EU-citizen # 52
EU-citizen # <10

Residence status for non-Portuguese (# 54)

27,8% permanent resident # 15	22,2% temporary resident # 12
20,4% undocumented resident # 11	27,8% in procedure # 15

Ever had stable housing? (# 422)

NO 10,2%
YES 89,8%

Duration (# 445)

< 2 months	6,5% # 29
2 months: under 1 year	18,2% # 81
1 year: under 2 years	11,9% # 53
2 years: under 5 years	20,2% # 90
≥ 5 years	43,1% # 192

Triggers leading to homelessness (# 447)

60,0% Health related issues, including addiction # 268	42,5% Family issues # 190	40,5% Financial reasons # 181	13,4% Eviction/tenancy loss # 60	8,3% Exit from an institution # 37
--	---------------------------	-------------------------------	----------------------------------	------------------------------------

Domestic abuse (6,0%), migration (8,1%), other (2,7%)

Note: people could choose up to 3 responses

33

	Population	TOTAL NUMBER	LIVING SITUATION					
			ETHOS Light 1		ETHOS Light 2		ETHOS Light 3	
			N	n	%	n	%	n
BOCHUM	362.213	1051	20	1.9	19	1.8	1012	96.2
BUDAPEST	1.690.000	3513	382	10.9	946	26.9	2185	62.2
CATANIA	311.580	149	102	68.5	5	3.4	42	28.2
CHARLEROI	400.000	588	158	26.9	117	19.9	313	53.2
CORK	224.000	544	37	6.8	18	3.3	489	89.9
DUBLIN	1.299.000	7647	151	2.0	0	0.0	7496	98.0
KOŠICE	225.000	520	151	29.0	156	30.0	213	41.0
LJUBLJANA	291.000	222	78	35.1	23	10.4	121	54.5
LYON	1.787.000	7527	853	11.3	328	4.4	6346	84.3
MILAN	1.370.000	256	163	63.7	41	16.0	52	20.3
MÜNSTER	322.900	1728	72	4.2	33	1.9	1623	93.9
NAMUR	322.900	469	132	28.1	70	14.9	267	57.0
NIJMEGEN	177.000	250	67	26.8	109	43.6	74	29.6
PORTO	249.000	607	281	46.3	36	5.9	290	47.8
WEST-FRIESLAND	195.500	147	27	18.4	18	12.2	102	69.4

GENDER

	Male		Female		Non-binary/diverse	
	n	%	n	%	n	%
BOCHUM	635	60.4	415	39.5	<10	
BUDAPEST	2322	67.0	1145	33.0	<10	
CATANIA	129	88.4	17	11.6	0	0.0
CHARLEROI	373	63.4	215	36.6	0	0.0
CORK	337	61.9	206	37.9	<10	
DUBLIN	4725	61.8	2918	38.2	<10	
KOŠICE	309	59.4	211	40.6	0	0.0
LJUBLJANA	146	66.1	71	32.1	<10	
LYON	3792	50.4	3735	49.6	0	0.0
MILAN	224	88.5	29	11.5	0	0.0
MÜNSTER	1066	61.7	661	38.3	<10	
NAMUR	296	63.1	171	36.5	2	0.4
NIJMEGEN	193	77.2	57	22.8	0	0.0
PORTO	475	80.1	117	19.7	<10	
WEST-FRIESLAND	91	61.9	56	38.1	0	0.0

Figures demand contextualisation

Impact of :

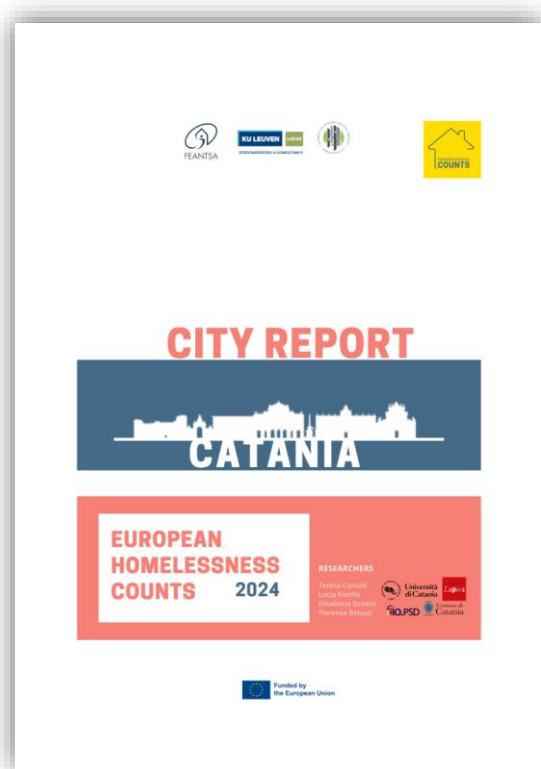
- Methodological choices and existing data collection
- Availability of emergency shelters and temporary accommodation
- Formal and informal access rules of shelters and temporary accommodation
- Migration patterns and migration policies
- Access to affordable housing
- Local and national criminalization policies
- Local and national social policies

Some lessons learned

- ETHOS Light as guiding framework, but operationalisation is needed
- Less consensus on ETHOS Light 4-6 → year 2
- Local ownership: political will, involvement of broad network of services, involvement of social workers
- Strengths AND limitations of point-in-time counts
- No golden standard to cover ETHOS Light 1
- The need for harmonisation and coordination with national data collection



More information?

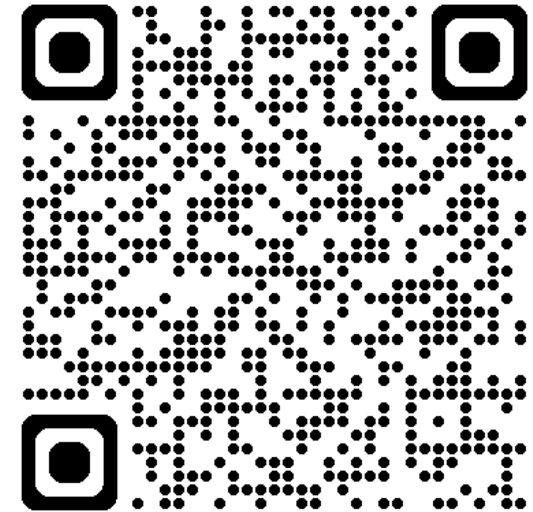


Results 2024



City posters 2025

Handbook
Final report 2024



https://www.kuleuven.be/lucas/en/eu_homelessness_counts