

HOMELESSNESS : AN EVOLVING PHENOMENON



- 1 LOCAL HOMELESSNESS PLANNING AND INTERVENTION UNIT
NPISA - OFFICIAL DATA
- 2 CONTEXT AND MISSION
- 3 AREAS OF EXPERTISE
- 4 CHALLENGES FOR THE FUTURE

LOCAL HOMELESS PLANNING AND INTERVENTION UNIT - NPISA

L I S B O N

LISBON CITY

Statistical data 2021 547.733 Inhabitants



HOMELESS PEOPLE IN THE COUNTRY

13.128

7.705

WITHOUT A ROOF

5.423

WITHOUT A HOUSE

26%

the homeless population in the country is located in the **Municipality of Lisbon**

7%

WITHOUT A ROOF

52%

WITHOUT A HOUSE

3.378

HOMELESS PEOPLE IN LISBON

0,6%

Resident Population

AS OF 31 DECEMBER 2024

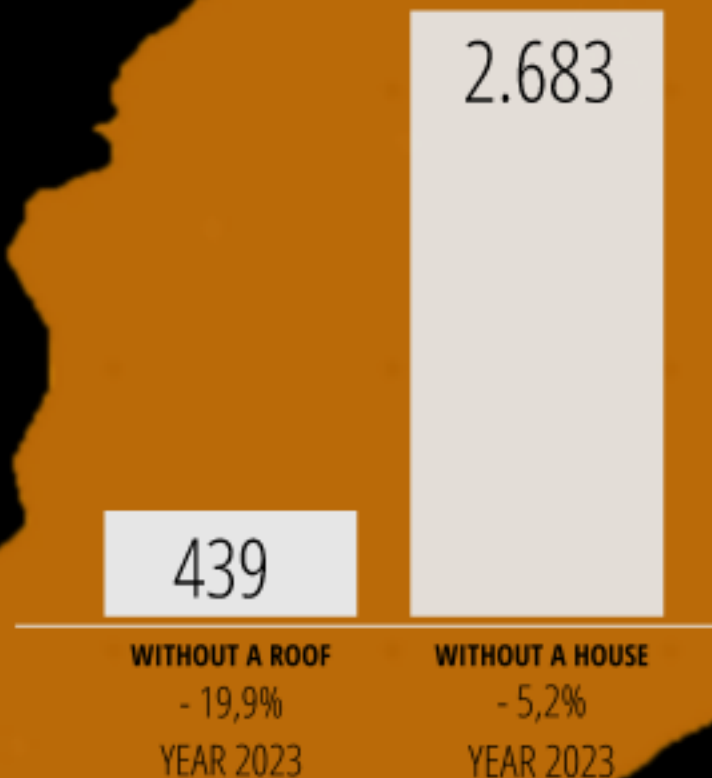
3.122

HOMELESS PEOPLE IN LISBON

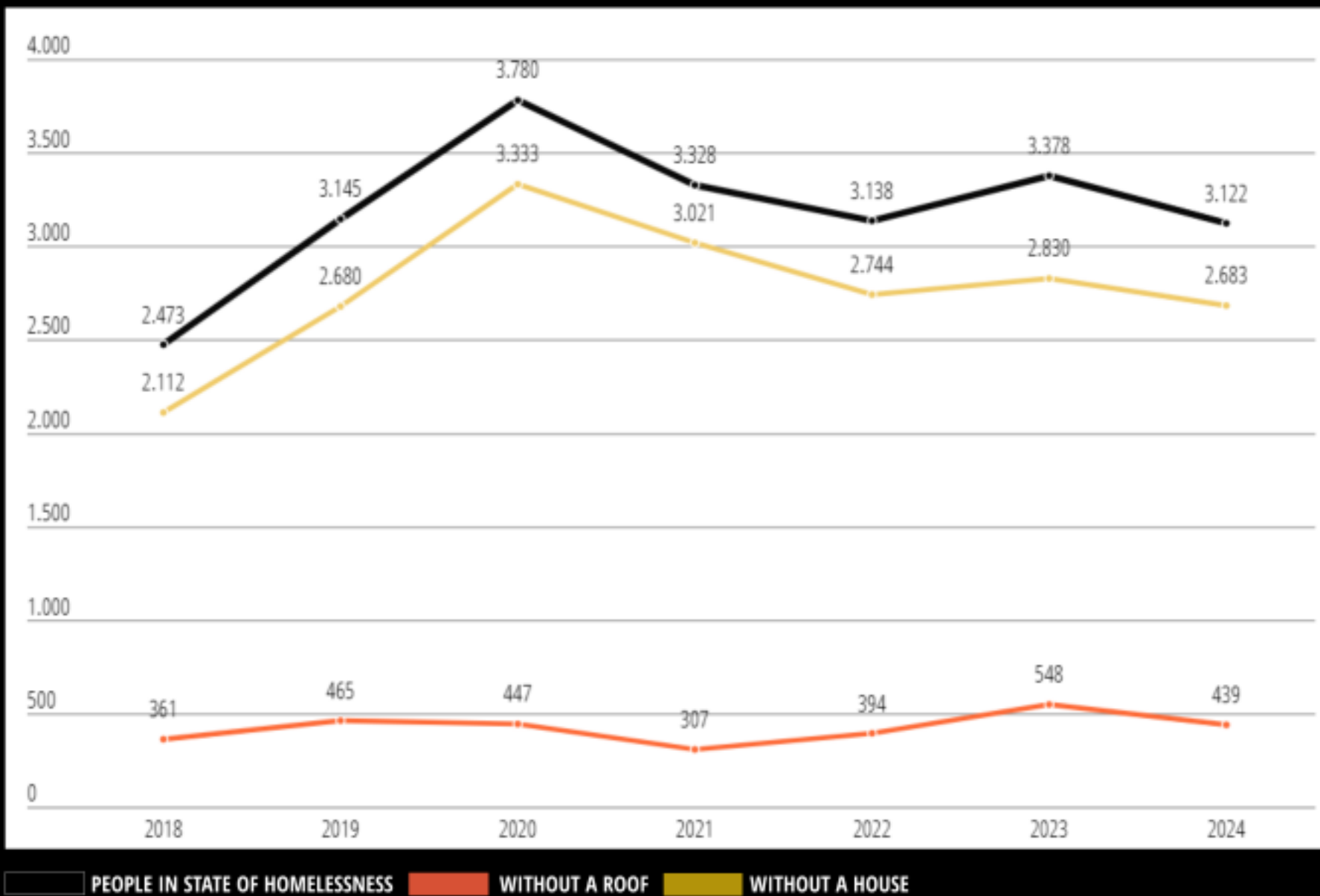


- 7,6%

YEAR 2023



EVOLUTION OF THE HOMELESS POPULATION BETWEEN 2018 AND 2024





2009

Lisbon Local Council for Social Action (CLAS de Lisboa) approved the Lisbon City Plan for Homeless, defining as strategic objectives to consensualize the reference model for the intervention of homeless people and to make the responses more efficient and oriented towards the needs of the population.

2014

Preparation of the Partnership Protocol to formalize the adhesion of the signatory parties to NPISA implementing the integrated intervention between the institutions that work with the homeless person in the city of Lisbon.

2015

Signing of the Partnership Protocol between the Tripartite Commission and 16 NPISA partner entities.

2015

Inauguration of the Homeless Person Assistance Unit (UAPSA).

NPISA - MISSION



NPISA is based on a tripartite structure, between the Social Security Institute, Santa Casa da Misericórdia de Lisboa (SCML) and the Lisbon City Council and is a free model structure based on the articulation of a network of partners where the various resources of each entity are leveraged and shared, its areas of intervention are transversal and cover various responses from emergency to empowerment. It is also the responsibility of this structure to monitor the phenomenon in the city of Lisbon.

Aims to Ensure integrated intervention between the institutions that work with the Homeless People in the city of Lisbon, in the promotion of their conditions of autonomy and the full exercise of citizenship.

Intends to leverage the resources made available by the Partner Entities, in basic and/or complementary actions to Programs, Projects or other Activities/Initiatives that collaborate for the set of responses to the needs of Homeless People, access to their autonomy.

N
P
I
S
A

SCML - SANTA CASA DA MISERICÓRDIA TO LISBON

Semi-public institution

Responsibility (delegated by the government/ISS,ip) to ensure social support (minimum income, accomodation, etc.)

ISS, IP - SOCIAL SECURITY INSTITUTE

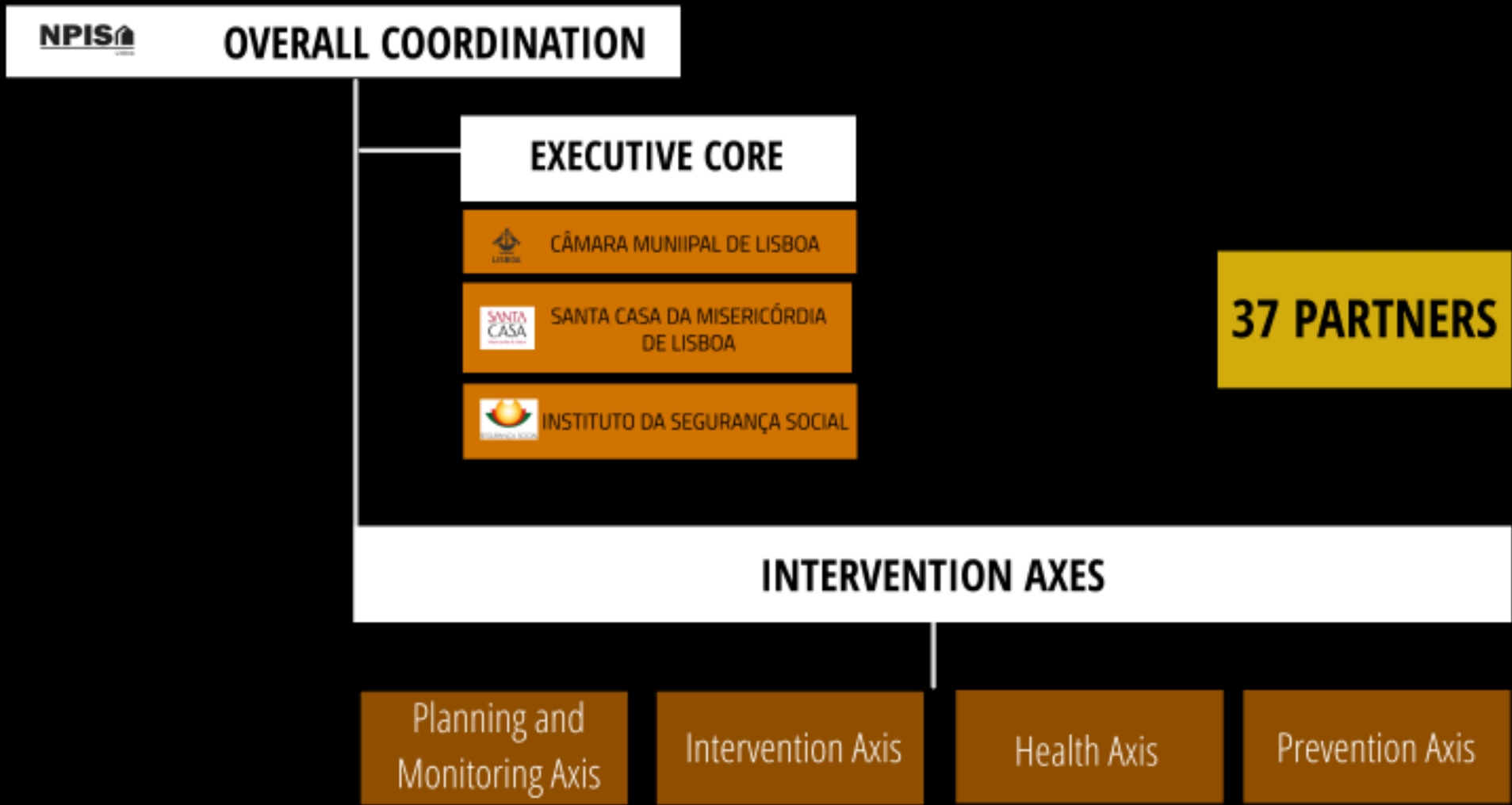
Funds projects throughout the country including Lisbon

CML - LISBON CITY COUNCIL

As manager of the city, assumed the political responsibility of this complex problem and complements the responses directed to the homeless person

ONG's - NON - GOVERNMENTAL ORGANISATIONS

NPISA - ORGANIZATIONAL STRUCTURE



NPISA - AREAS OF EXPERTISE



The Homeless Person's Assistance Unit (UAPSA) develops a model of assistance and social support to people in emergency situations and/or with serious social risk, promoting intervention processes, framed in a user's life project, aimed at complementarity, profitability and adequacy of social responses.



PROCEDURE

1

TRIAGE

Aimed at all people who use the service for the first time or who have not contacted the services for more than a year. The social assistance of the triage is carried out by a technical team made up of a Social Worker and a Psychologist, working in such a way that no one stays overnight on the street, if they wish to be accommodated, also immediately safeguarding all the basic needs (food, hygiene, clothing, access to healthcare and medication).

2

FOLLOW-UP

After the preparation of a psychosocial pre-diagnosis, a specialized case manager technician is assigned, who will follow up according to the predominant problem, namely: employability, irregularities, mental health, health physical, elderly, dependencies and families. UAPSA also supports applicants for International Protection, who are in the appeal phase and those who are relocated.

COVID 19



collaboration with various CML services, such as the Municipal Civil Protection Service and the strategic partner ARSLVT and Public Health, also involving the universe of the other partner entities

WORKING MEETINGS

with the various NPISA partners to discuss action strategies, reassess needs, priorities and operating procedures



NPISA - OTHERS AREAS OF EXPERTISE

COLD AND HOT WEATHER CONTINGENCY PLAN

Keep the contingency plan for cold and hot weather updated, in close coordination with the Municipal Civil Protection Service



NPISA - OTHERS AREAS OF EXPERTISE

VACCINATION CAMPAIGN

Keep the contingency plan for cold and hot weather updated, in close coordination with the Municipal Civil Protection Service

VACINE-SE!

A Administração Regional de Saúde de Lisboa e Vale do Tejo (ARS LVT) e o Serviço de Planeamento e Intervenção para a Pessoa em Situação Sem Abrigo (SPISA) apresentam a **CAMPAÑA DE CO-VACINAÇÃO CONTRA A GRIPE SAZONAL E A COVID-19** para as **PESSOAS EM SITUAÇÃO SEM ABRIGO** da Cidade de Lisboa.

Esta campanha conta com a colaboração das seguintes instituições:

ARS LVT
ASSOCIAÇÃO DE ALTERNATIVAS RESTRITAS DE LISBOA - AARL
AJUDA - ASSOCIAÇÃO DE AJUDA E INTERMEDIÇÃO A PESSOAS CARENTOSAS
ASSOCIAÇÃO DE SOLIDARIEDADE E DESARROLHAMENTO SUSTENTÁVEL - VIMAR
ASSOCIAÇÃO VIDA AUTÓNOMA - AVA
COMISSÃO VIVA E PAC - CIVICUS
DESCOOP - ASSOCIAÇÃO DE EMPREENHADORES COOPERATIVAS
DIREITO DE SALUDAÇÃO
FUNDAÇÃO DE APOIO ÀS AÇÕES DE INTERVENÇÃO - FAI
GRUPO DE INTERVENÇÃO EM TERAPIAS DE - GIP - PORTUGAL
MÉDICO DO MUNDO - AMM
SERVIDOR - ASSOCIAÇÃO DE INTERVENÇÃO PARA A MORADIA
VIVA CIDA DA REGRADUAÇÃO DE LISBOA - RCL

NPISALISBOA
Informações NPISA: Lisboa: Serviço de Planeamento e Intervenção para a Pessoa em Situação Sem Abrigo
Rua Carlos do Porto de Lisboa, Casa do Galo
811 347 287 npisa@cm-lisboa.pt

**OUTUBRO
NOVEMBRO
2023**

**CO-VACINAÇÃO
CAMPAÑA DE VACINAÇÃO**

**PESSOAS EM SITUAÇÃO DE
SEM ABRIGO**

UTENTES EM UNIDADES MÓVEIS

CALENDÁRIO DA CAMPANHA DE VACINAÇÃO EM UNIDADES MÓVEIS

6 e 9 de novembro	8 e 9 de novembro
<ul style="list-style-type: none"> 8:30h - 10:00h - Avenida de Ceira 10:30h - 11:30h - Lameira 12:00h - 13:30h - Praça do Espinho 15:30h - 17:30h - Avenida de Ceira 17:30h - 19:30h - Praça da Fronteira 	<ul style="list-style-type: none"> 8:30h - 10:00h - Santa Apolónia 10:30h - 12:30h - São Vítor 14:30h - 16:00h - Lameira 16:30h - 17:30h - São Vítor 18:00h - 19:30h - Santa Apolónia

ANEXO 1016 - Serviço de planeamento - SPISA - Rua 1.º de Dezembro, 136 - Lisboa - Portugal - NPISA - 21 647 2020 - 21 647 2021 - 919 999 922 - 919 999 920

NPISA - OTHERS AREAS OF EXPERTISE

3

TRAINING AND AWARENESS ACTIONS

Promote training
and awareness-
raising actions

LISBOA NPISA

Sessão de Informação e Sensibilização
Fóruns do Modelo de Planeamento e Intervenção para a Pessoa em Situação Sem Abrigo

PROGRAMA

10H00
Bom dia

10H10
Sessão de Informação e sensibilização
"PROGRAMAS MUNICIPAIS DE ACESSO À HABITAÇÃO"

- 1 - Enquadramento - Regulamento Municipal Dever à Habitação
- 2 - Apresentação do Plano de "HABITAR LISBOA"
- 3 - Serviço de Apoio

12H30
Espaço para Esclarecimentos / Dúvidas / Questões

13H00
Encerramento

07 Sala do Arquivo dos Paços do Concelho
Praça do Município
FEV PROGRAMAS MUNICIPAIS
ACESSO À
HABITAÇÃO

Instituição colaboradora: Associação Sítio.pt

MONITORING THE PHENOMENON

Monitor the
phenomenon in
line with the
guidelines defined
by ENIPSSA

NPISA - OTHERS AREAS OF EXPERTISE

EMERGENCY SERVICE

Ensuring the operation of the Emergency Service

THE ARTICULATION WORK

with ENIPSSA and other NPISAs, as well as the consolidation of partnerships already established

PARTICIPATION OF HOMELESS PEOPLE

Promote the participation and involvement of homeless people



NPISA - CHALLENGES FOR THE FUTURE

Implementation of measures that seek to identify risk situations and intervene preventively, the aim is to define lines of action in the area of Prevention and assess their impact

Reflection on the network of existing responses and the respective models, in order to guarantee the quality of the intervention carried out with the ultimate aim of an effective process of empowerment of the PSSA

Ensure the follow-up of situations, devising a mechanism for consultation between the various actors, ensuring updated information on the same

Recommendations for an Intervention Strategy for Homeless People in the Lisbon Metropolitan Area

Aligned with the New National Strategy for the Integration of Homeless People 2025–2030 (ENIPSSA), this metropolitan initiative aims to develop integrated, person-centred solutions that promote access to housing, healthcare, employment, and participation.

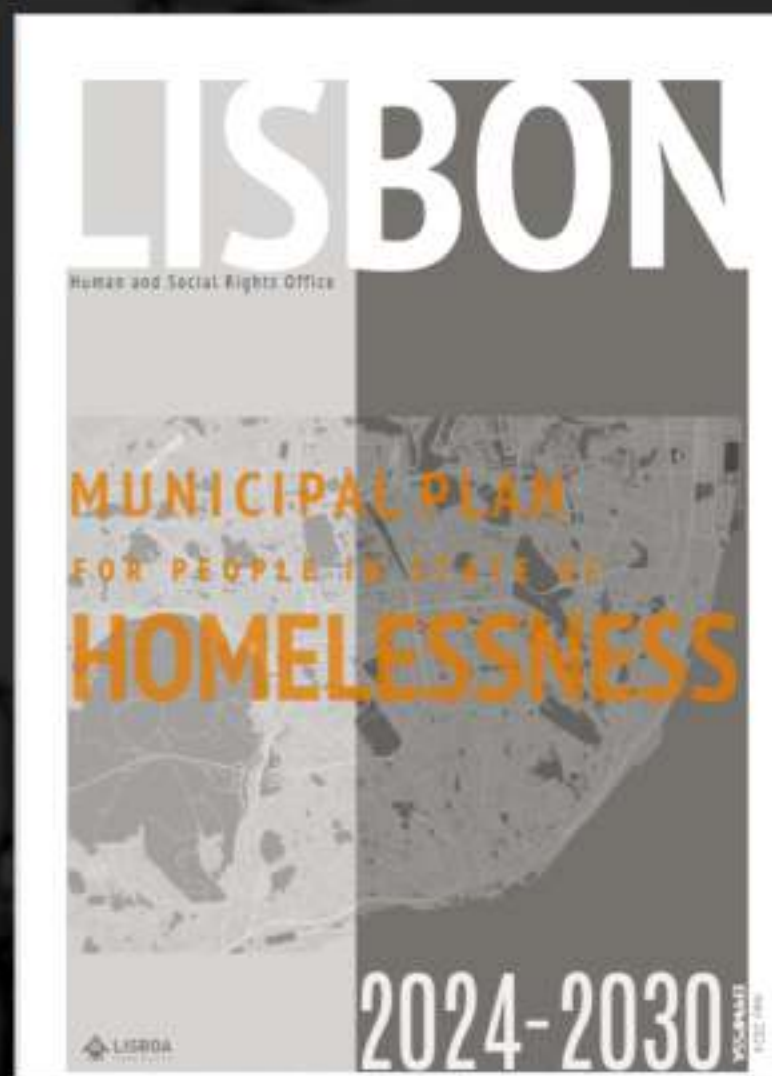
Through the reflection and professional development of practice, the standardisation of intervention procedures with homeless people, the sharing of resources, the creation and mobilisation of dignified housing support responses, and the promotion of sustainable life projects tailored to individual needs, the goal is to build a more effective and cohesive metropolitan-level response.



NPISA - CHALLENGES FOR THE FUTURE

Municipal Plan for People in State of HOMELESSNESS

<https://pisa.com/1/view/hT5d5pgNCVW7yFPOC0b2>



The background is a dark grey illustration of a city street scene. It features various elements like buildings, street lamps, and silhouettes of people walking. The style is simple and sketchy, with white lines on a dark background. The overall mood is urban and somewhat somber, fitting the theme of homelessness.

LIGHT AS A FEATHER,

HIGH AS A TOWER,

WARM AS A NEST

AND SWEET AS HONEY,

SO I IMAGINED

FROM AN EARLY AGE

TO MY HOUSE...

TRANK YOU

NÚCLEO DE PLANEAMENTO E INTERVENÇÃO SEM-ABRIGO (NPISA)

june 2025

HOMELESSNESS : AN EVOLVING PHENOMENON



- 1 LOCAL HOMELESSNESS PLANNING AND INTERVENTION UNIT
NPISA - OFFICIAL DATA
- 2 CONTEXT AND MISSION
- 3 AREAS OF EXPERTISE
- 4 CHALLENGES FOR THE FUTURE

LOCAL HOMELESS PLANNING AND INTERVENTION UNIT - NPISA

L I S B O N